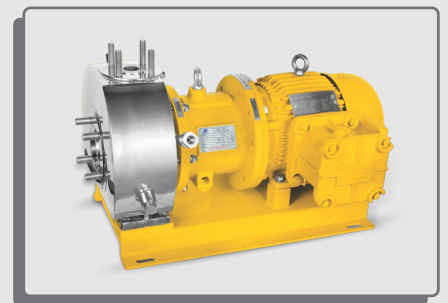
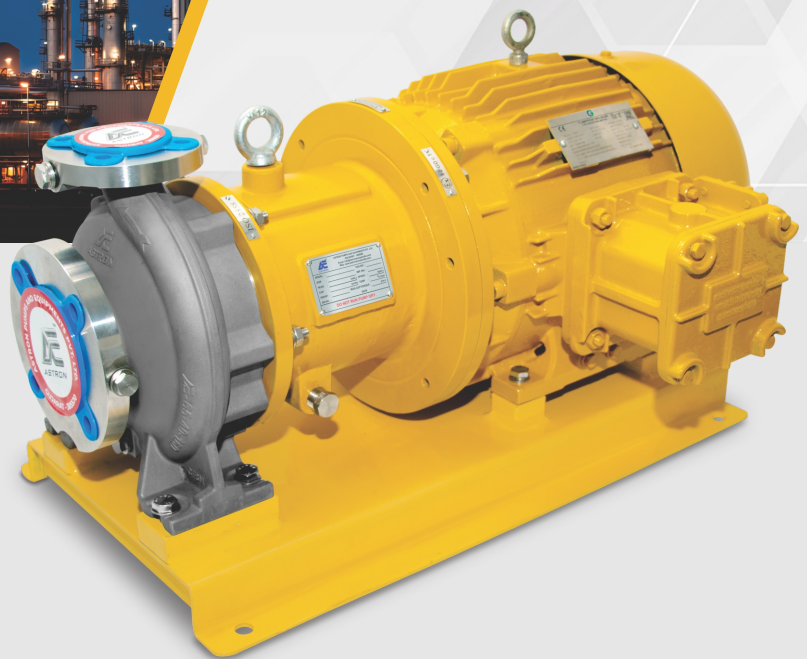


**RECOGNIZED**  
**FOR**  
**EXPERTISE**



Seal-less Magnetic  
Drive Process Pumps  
( Metallic Series )



# AMPC SERIES

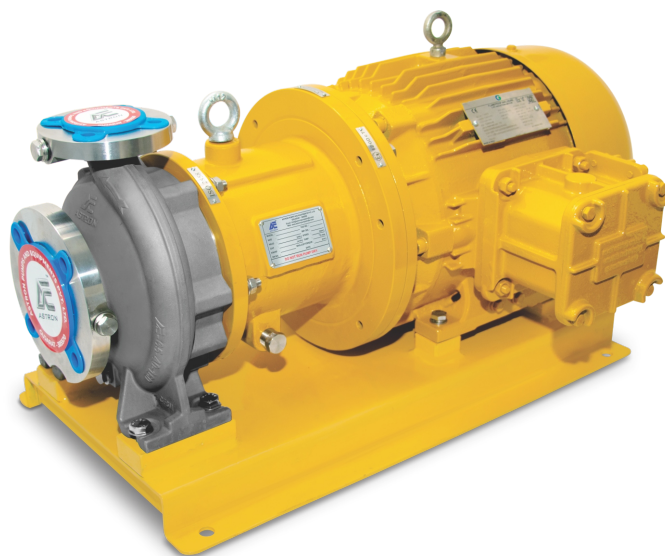
## Magnetic Sealless Drive Pump (Close Couple)

### ❖ Overview – For a Sealless Future

Astron has been a Leading Manufacturers of pumping systems and industries. At the moment, Astron is liable for leading innovative technologies in handling critical operations. Our Sealless technology in specifically for particular applications.

### ❖ Product Range :

Max. Head	: 95 m / 312 ft
Max. Flow	: 300 m <sup>3</sup> /h / 79251.6 US gph
Temperature Range	: -35°C to +350°C
Max. Working Pressure	: PN16
Flange Class	: Class 150
Impeller Type	: Close
Max. Motor Power	: 55 kW / 75 HP



### ❖ MOC :

SS 316, SS 316L, Hastelloy, Duplex, etc.

### ❖ Key Features :

- ◆ Single stage horizontal centrifugal pump.
- ◆ Hydraulic performance and dimensions according to DIN EN ISO 2858.
- ◆ Design based on DIN EN ISO 15783.
- ◆ Product-lubricated journal bearings; made of siliconcarbide (SSIC) or customized materials.
- ◆ Optional dry run relay available.

### ❖ Applications :

#### Chemical Processing

- ◆ Fertilizer
- ◆ Nitric acid
- ◆ Chloro - Alkali
- ◆ Fluoro-Chemical
- ◆ Speciality Chemicals
- ◆ Dyes & Intermediates

#### Solvent Transfer

- ◆ Dilute
- ◆ Acetone
- ◆ Benzene
- ◆ Methanol
- ◆ Ethyl Acetate
- ◆ Methoxy Propanol

#### Others

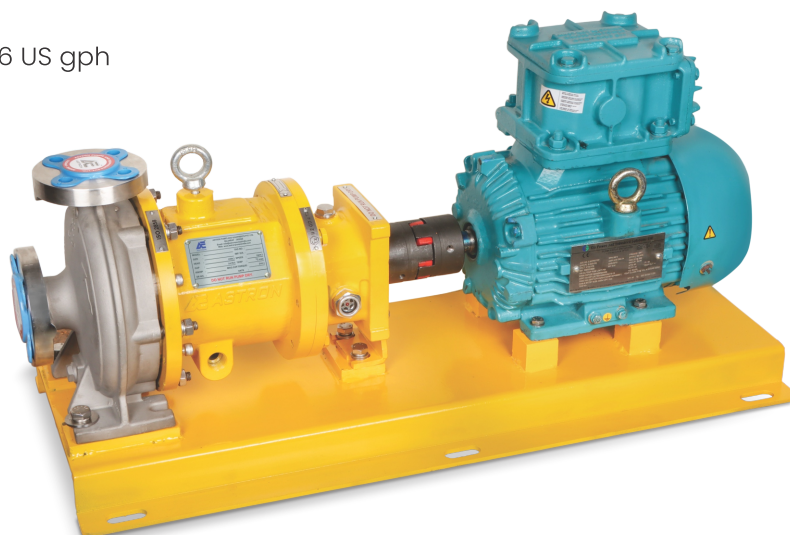
- ◆ Pharmaceutical
- ◆ Catalyst Solutions
- ◆ Polymer Processing
- ◆ Petrochemical Industry
- ◆ Corrosive & Non Corrosive Reactors
- ◆ Evaporator & Crystallizer Circulation

# AMPB SERIES

## Magnetic Sealless Drive Pump (Bare Shaft)

### ❖ Product Range :

Max. Head	: 95 m / 312 ft
Max. Flow	: 300 m <sup>3</sup> /h / 79251.6 US gph
Temperature Range	: -35°C to +350°C
Max. Working Pressure	: PN16
Flange Class	: Class 150
Impeller Type	: Close
Max. Motor Power	: 55 kW / 75 HP



### ❖ MOC :

SS 316, SS 316L, Hastelloy, Duplex, etc.

### ❖ Key Features :

- ZERO Leakage & Minimum maintenance.
- Handling corrosive and hazardous liquids.
- No physical contact between driving and driven parts.
- Double bearing cartridge design for better performance.
- Providing quick replacement and easy inventory management.
- Eliminates rotating seals which makes them ideal for pumping.
- Optional drive-end, Close couple or Long couple options available.

### ❖ Applications :

- Solvent transfer
- Chloro Alkalis Industries
- Organic & Speciality Chemicals
- Chemical & Processing Industries
- Corrosive & Non Corrosive Liquids
- Hazardous Chemicals
- Petrochemical Industry
- Tanker loading & unloading
- API Pharmaceuticals Industries
- Handling of dyes & Intermediates

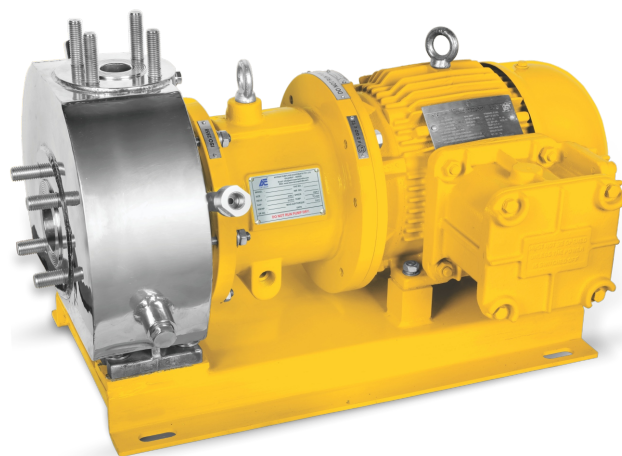
# JACKETED PUMP

## ❖ Product Overview – Jacketed Pump

Astron offers magnetic drive pumps with a semi-jacket that has good heat retention qualities at an affordable cost and with ease of use. These pumps are particularly suited for liquids like high-viscosity oils, grease, adhesives, etc. that solidify or become highly viscous at room temperature. Steam is circulated in the pump body to heat the liquid being pumped.

## ❖ Product Range :

Max. Head	: 95 m / 312 ft
Max. Flow	: 300 m <sup>3</sup> /h / 79251.6 US gph
Temperature Range	: -35°C to +350°C
Max. Working Pressure	: PN16
Flange Class	: Class 150
Impeller Type	: Close
Max. Motor Power	: 55 kW / 75 HP



**Jacketed MOC : SS316**

**Jacketed Medium : Steam**

## ❖ Key Features :

- ♦ Eliminating the seals also prevents wear, noise, expenses, and friction loss.
- ♦ Simple modular construction for ease of maintenance.
- ♦ Back pullout design to facilitate inspection and maintenance.
- ♦ High level of durability and reliability.
- ♦ Options for leak detection are available to avoid any environmental leaks.

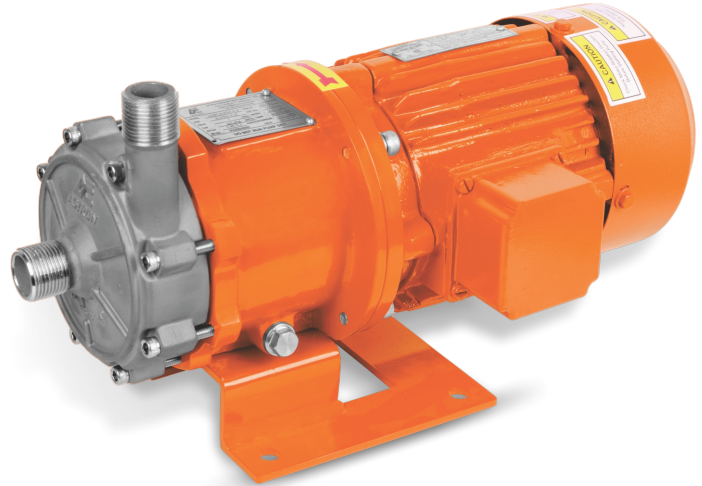
## ❖ Applications :

- ♦ Xylene
- ♦ Coal Tar
- ♦ Toluene
- ♦ Glycerol
- ♦ Benzene
- ♦ Diethyl Ether
- ♦ Resins
- ♦ Adhesives
- ♦ Molten Sulphur
- ♦ Tri-Chloromethane
- ♦ Carbon tetrachloride
- ♦ Dyes & Intermediates
- ♦ Thionyl Chloride
- ♦ Black Liquor soap
- ♦ High Viscosity Oils
- ♦ P-Nitrochlorobenzene
- ♦ Petroleum & Additives
- ♦ Plastic & Rubber Industry

## Magnetic Sealless Drive Pump (Compact Pump)

### ❖ Product Range :

Max. Head	: 19 m / 62 ft
Max. Flow	: 165 lpm / 43.7 US gph
Temperature Range	: -35°C to +200°C
Impeller Type	: Semi Open
Max. Motor Power	: 0.75 kW or 1HP
Drive	: Close Couple
Type of Connection	: Threaded BSP



### ❖ Key Features :

- ◆ Least manpower for lifting.
- ◆ Negligible noise and vibrations.
- ◆ Magnet power provides precise Efficiency.
- ◆ Designed in compact order for lesser space.
- ◆ All rotating components are connected by a common shaft.

### ❖ Applications :

- ◆ Oil for Heat Transfer
- ◆ Radioactive & Toxic Liquids
- ◆ API Pharmaceuticals Industries
- ◆ Recycling & Waste Management
- ◆ Alkalis & Caustic Chemical Pumping

### ❖ Valuable Spares :



**Volute Casing**



**Impeller**



**Casing Cover**



**Containment Shell**



# ASTRON PUMPS & EQUIPMENTS PVT. LTD.

## INTRODUCING ADVANCED SEALLESS PUMPS

### OFFICE & MFG. UNIT

Plot No. B/173/3, Nr. Sonal Park,  
Dist-Banaskantha, Kanodar-385520, Gujarat. INDIA

+91-9601584988 / +91-9601584989

### MUMBAI OFFICE

1A, 1<sup>st</sup> Floor, Sadhana Industrial Estate, Oshiwara,  
S.V.Road, Jogeshwari (w), Mumbai-400102.

+91-9769989511 / +91-9699488333

info@astronpumpsindia.com

For further information,

www.astronpumpsindia.com

AUTHORISED DEALER / DISTRIBUTOR



Scan to download PDF

Made In India

